

SMARTFLOW[®] Stainless Steel Manifolds with Conventional Ports



General Description

Smartflow[®] stainless steel manifolds are formed and welded from 304 stainless steel. The manifolds are 100% leak tested for quality assurance before shipping.

Smartflow stainless steel manifolds are excellent for high-flow applications where chemical compatibility and corrosion-resistance are important. Manifold bodies are made from 1-1/2" or 2" square tube to allow maximum flow. Custom modifications are easily handled to provide the exact configuration you need.

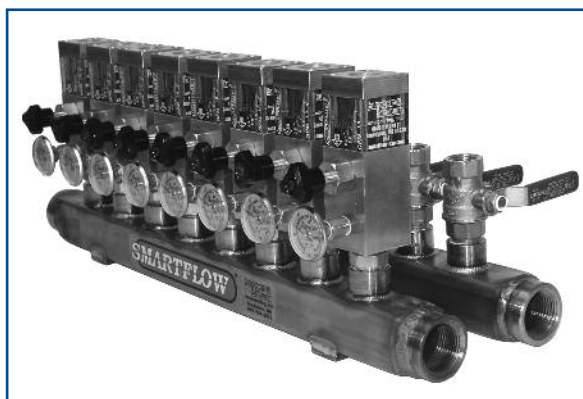
Model Number

	8	SS	-	16	-	2	-	2	-	A	
Supply Threads											Port Sizes
1"NPT	8										2 1/4"NPT
1"BSPP	8B										2B 1/4"BSPP
1-1/2"NPT	12										3 3/8"NPT
1-1/2"BSPP	12B										3B 3/8"BSPP
											4 1/2"NPT
											4B 1/2"BSPP
											6 *3/4"NPT
											6B *3/4"BSPP
Manifold Styles											*76.2mm/3.0" port spacing
Single		SS									
Parallel		PSS									
						4					Total Number of Ports
						to					
						32					

Design and specifications are subject to change without notice.
See page 19 for manifold testing and use.

Specifications

Material.....304 Stainless Steel
Temperature Rating.....up to 250°F (121°C)
Maximum Working Pressure Ratings
Gas (air, inert gas)125 psi
Liquid (oil, water, benign fluids)250 psi



Assembly

Smartflow[®] stainless steel manifolds are the platform for control of cooling water lines in many types of industrial process cooling. Flowmeters, Flow Regulators, Ball Valves, Quick Disconnect Fittings and more can be added to the manifolds to improve functionality and process control. See page 12 for ordering information.

Flowmeters and flow regulators are customarily assembled onto one side of parallel manifolds with flow direction into the return side of the manifold.

ManifoldBuilder

On-Line Part Number Specification Assistance

3D Native CAD files for manifolds and assemblies are available for download 24/7 at

www.manifoldbuilder.com

Contact your distributor
for custom manifolds.

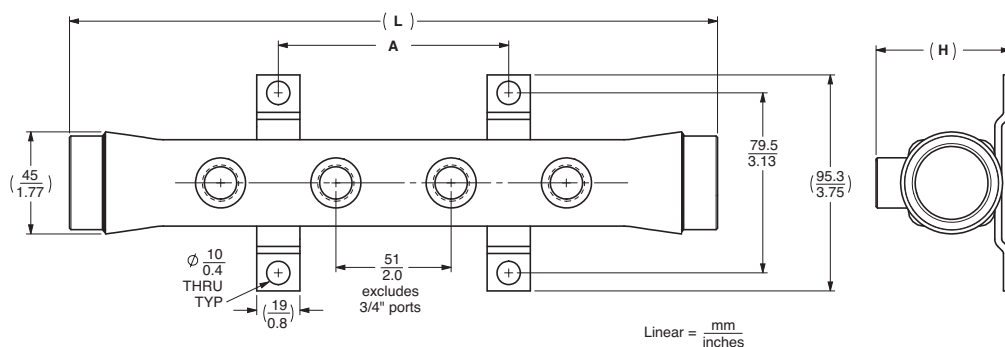
SMARTFLOW[®] Stainless Steel Manifolds with Conventional Ports

Model Numbers and Dimensions (3/8" & 1/2" ports only)

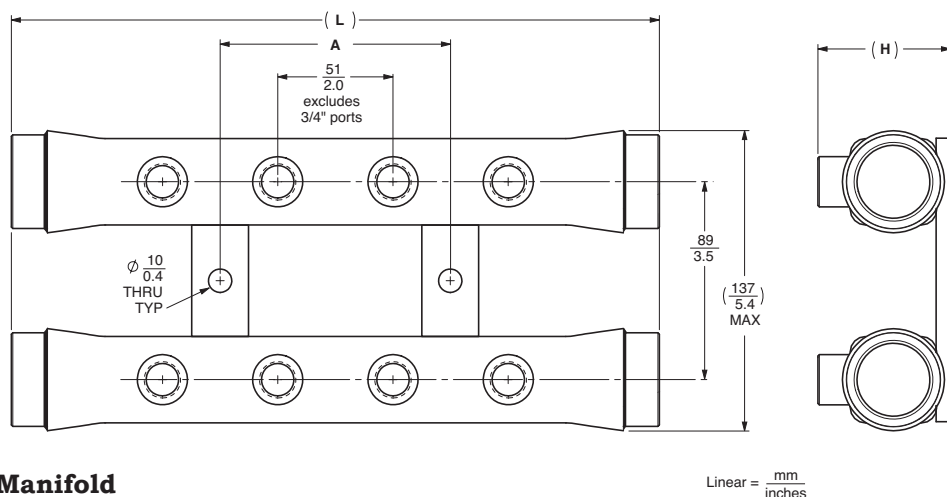
	Single Manifolds	Parallel Manifolds	Dimension A	Dimension L	Dimension H
1" Inlet	8SS - 4 - □ - 2 - A	8PSS - 8 - □ - 2 - A	102mm / 4"	286mm / 11.25"	64mm 2.5" max.
	8SS - 6 - □ - 2 - A	8PSS - 12 - □ - 2 - A	203mm / 8"	387mm / 15.25"	
	8SS - 8 - □ - 2 - A	8PSS - 16 - □ - 2 - A	305mm / 12"	489mm / 19.25"	
	8SS - 10 - □ - 2 - A	8PSS - 20 - □ - 2 - A	406mm / 16"	591mm / 23.25"	
	8SS - 12 - □ - 2 - A	8PSS - 24 - □ - 2 - A	508mm / 20"	692mm / 27.25"	
	8SS - 14 - □ - 2 - A	8PSS - 28 - □ - 2 - A	610mm / 24"	794mm / 31.25"	
1-1/2" Inlet	8SS - 16 - □ - 2 - A	8PSS - 32 - □ - 2 - A	711mm / 28"	895mm / 35.25"	76mm 3" max.
	12SS - 4 - □ - 2 - A	12PSS - 8 - □ - 2 - A	102mm / 4"	299mm / 11.75"	
	12SS - 6 - □ - 2 - A	12PSS - 12 - □ - 2 - A	203mm / 8"	400mm / 15.75"	
	12SS - 8 - □ - 2 - A	12PSS - 16 - □ - 2 - A	305mm / 12"	502mm / 19.75"	
	12SS - 10 - □ - 2 - A	12PSS - 20 - □ - 2 - A	406mm / 16"	603mm / 23.75"	
	12SS - 12 - □ - 2 - A	12PSS - 24 - □ - 2 - A	508mm / 20"	705mm / 27.75"	
	12SS - 14 - □ - 2 - A	12PSS - 28 - □ - 2 - A	610mm / 24"	806mm / 31.75"	
	12SS - 16 - □ - 2 - A	12PSS - 32 - □ - 2 - A	711mm / 28"	908mm / 35.75"	

□ = port thread size [3 = 3/8"NPT(F) or 4 = 1/2"NPT(F)]

3/4" ports require special consideration. Contact the factory for dimensions.



Single Manifold



Parallel Manifold

Dimensions shown are for manifolds with NPT threads only. Contact the factory for manifold dimensions with BSPP threads.

SMARTFLOW[®] Stainless Steel Manifolds with Low Profile Ports (NPT only)



Specifications

Material.....304 Stainless Steel
 Temperature Rating.....up to 250°F (121°C)
Maximum Working Pressure Ratings
 Gas (air, inert gas)125 psi
 Liquid (oil, water, benign fluids)250 psi



General Description

Smartflow[®] stainless steel manifolds are formed and welded from 304 stainless steel. The manifolds are 100% leak tested for quality assurance before shipping. Stainless steel manifolds with low profile ports offer an economical alternative to our conventional port manifolds.

Smartflow stainless steel manifolds are excellent for high-flow applications where chemical compatibility and corrosion-resistance are important. Manifold bodies are made from 1-1/2" or 2" square tube to allow maximum flow. Custom modifications are easily handled to provide the exact configuration you need.

Assembly

Smartflow[®] stainless steel manifolds are the platform for control of cooling water lines in many types of industrial process cooling. Flowmeters, Flow Regulators, Ball Valves, Quick Disconnect Fittings and more can be added to the manifolds to improve functionality and process control. See page 12 for ordering information.

Flowmeters and flow regulators are customarily assembled onto one side of parallel manifolds with flow direction into the return side of the manifold.

Model Number

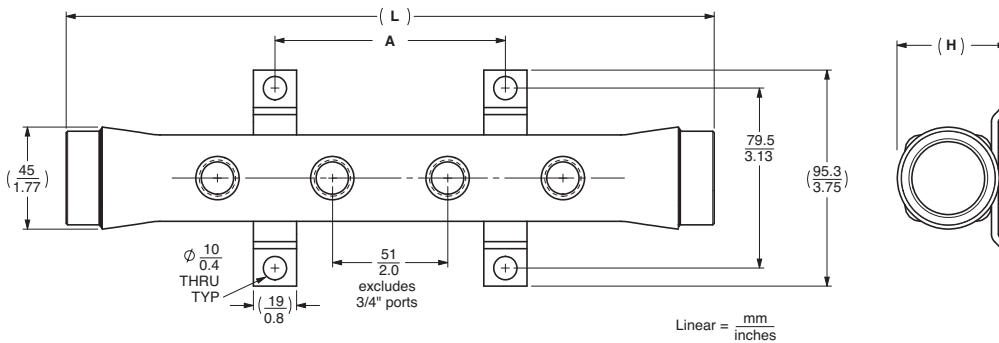
		8	SL	-	16	-	2	-	2	-	A		
Supply Threads										Port Sizes			
1"NPT	8									3	3/8"NPT		
1-1/2"NPT	12									4	1/2"NPT		
Manifold Styles													
Single	SL												
Parallel	PSL												

SMARTFLOW[®] Stainless Steel Manifolds with Low Profile Ports (NPT only)

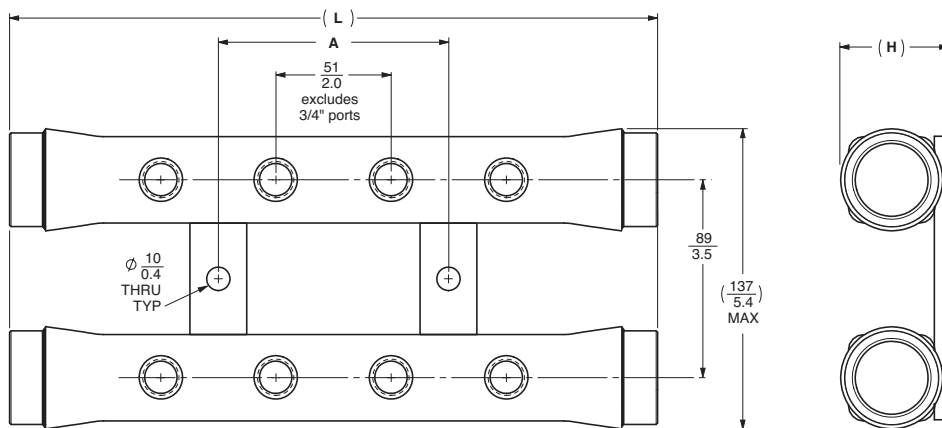
Model Numbers and Dimensions (3/8" & 1/2" NPT ports only)

	Single Manifolds	Parallel Manifolds	Dimension A	Dimension L	Dimension H
1" Inlet	8SL - 4 - □ - 2 - A	8PSL - 8 - □ - 2 - A	102mm / 4"	283mm / 11.13"	51mm 2" max.
	8SL - 6 - □ - 2 - A	8PSL - 12 - □ - 2 - A	203mm / 8"	384mm / 15.13"	
	8SL - 8 - □ - 2 - A	8PSL - 16 - □ - 2 - A	305mm / 12"	486mm / 19.13"	
	8SL - 10 - □ - 2 - A	8PSL - 20 - □ - 2 - A	406mm / 16"	587mm / 23.13"	
	8SL - 12 - □ - 2 - A	8PSL - 24 - □ - 2 - A	508mm / 20"	689mm / 27.13"	
	8SL - 14 - □ - 2 - A	8PSL - 28 - □ - 2 - A	610mm / 24"	791mm / 31.13"	
1-1/2" Inlet	8SL - 16 - □ - 2 - A	8PSL - 32 - □ - 2 - A	711mm / 28"	892mm / 35.13"	64mm 2.5" max.
	12SL - 4 - □ - 2 - A	12PSL - 8 - □ - 2 - A	102mm / 4"	283mm / 11.13"	
	12SL - 6 - □ - 2 - A	12PSL - 12 - □ - 2 - A	203mm / 8"	384mm / 15.13"	
	12SL - 8 - □ - 2 - A	12PSL - 16 - □ - 2 - A	305mm / 12"	486mm / 19.13"	
	12SL - 10 - □ - 2 - A	12PSL - 20 - □ - 2 - A	406mm / 16"	587mm / 23.13"	
	12SL - 12 - □ - 2 - A	12PSL - 24 - □ - 2 - A	508mm / 20"	689mm / 27.13"	
	12SL - 14 - □ - 2 - A	12PSL - 28 - □ - 2 - A	610mm / 24"	791mm / 31.13"	
	12SL - 16 - □ - 2 - A	12PSL - 32 - □ - 2 - A	711mm / 28"	892mm / 35.13"	

□ = port thread size [3 = 3/8"NPT(F) or 4 = 1/2"NPT(F)]



Single Manifold



Parallel Manifold

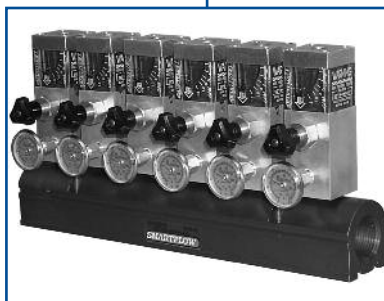
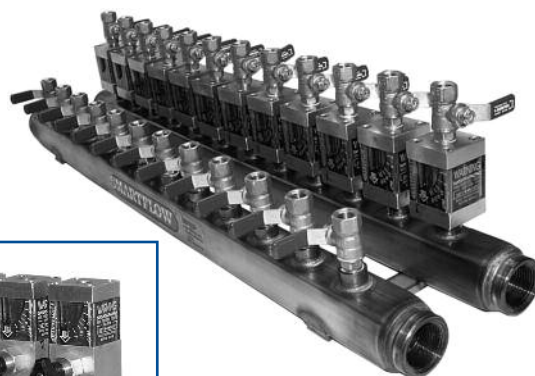
SMARTFLOW® Aluminum and Stainless Steel Manifold Assemblies

Assembly Specification

The Smartflow® manifold line is the platform to control and direct cooling water in many types of industrial process cooling. Flowmeters, Flow Regulators, Ball Valves, Quick Disconnect Fittings and more can be added to manifolds to improve functionality and process control. Individual cooling lines can be accurately controlled according to the demands of each circuit.

Parallel Stainless Steel Manifold Assemblies are built with flowmeters on one half of the manifold pair only. Contact the factory if alternate configuration is needed

Burger & Brown Engineering recommends placing flowmeters and regulators on the return side of the cooling loop for best performance.



Model Number

Manifold P/N	8SA - 8 - 3 - 2 - Y - F3-A-80 - B3Q3 - R	
Aluminum or Stainless Steel Manifold Model Number from Pages 4 - 11		Function R Return fluid flow entering the manifold (default) S Supply fluid flow exiting the manifold
*Flowmeter/Regulator installed on each port of the manifold No additional flowmeter/regulator Mechanical Flowmeter Brass Flow Regulator Delta-Q Precision Flow Regulator Tracer Electronic Flowmeter Tracer® _{VM} Electronic Flowmeter		Connection Type Brass Valves and Fittings NA No additional valve or fitting B2 Ball Valve 1/4"NPT B3 Ball Valve 3/8"NPT B4 Ball Valve 1/2"NPT H2 Hose Barb 1/4"ID hose H3 Hose Barb 3/8"ID hose H4 Hose Barb 1/2"ID hose Q2 Quick Connect Plug 1/4"ID (200 Series) Q3 Quick Connect Plug 3/8"ID (300 Series) Q4 Quick Connect Plug 1/2"ID (500 Series)
*Consult Flowmeter Catalog Form #189 and Catalog Form #190		NA F FR F-Q DD VM

ManifoldBuilder

On-Line Part Number Specification Assistance

3D Native CAD files for manifolds and assemblies are available for download 24/7 at www.manifoldbuilder.com